

MAP Signaling Gateway

Mobile Value-Added Services Made Easy

ANTlabs
Connectivity **Made Easy**

ANTlabs MAP Signaling Gateway is a generic signaling platform suitable for mobile value-added services. This is built on our propriety MAP software module that handles signaling messages between VLR, HLR, MSC, BSC, SMSC, etc.



Comprehensive Features List

Supported MAP messages

- MAP-SEND-AUTENTICATION-INFO (SAI)
- MAP-SEND-IMSI-REQUEST (SIR)
- MAP-SEND-ROUTING-INFO-FOR-SM

Message Routing

- Fixed routing (IMSI prefix to GT mapping)
- Dynamic routing (IMSI prefix to GT prefix routing)

Performance

- Up to 1,000 TPS
- Up to 500 MPS
- In-memory only caching of triplets/quintuplets

Administration

- Secure (SSL) web-based administration
- Secure (SSH) command line interface

Reliability

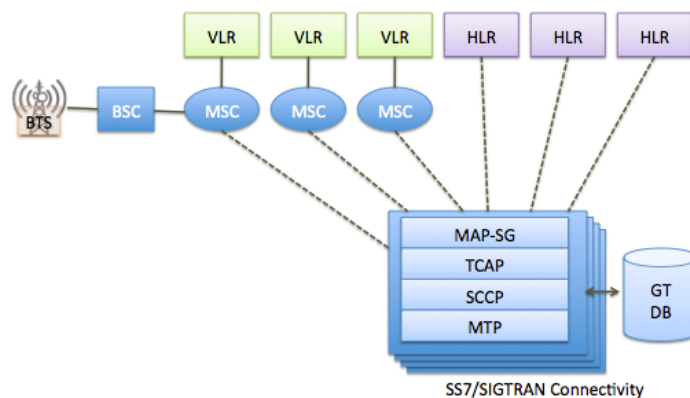
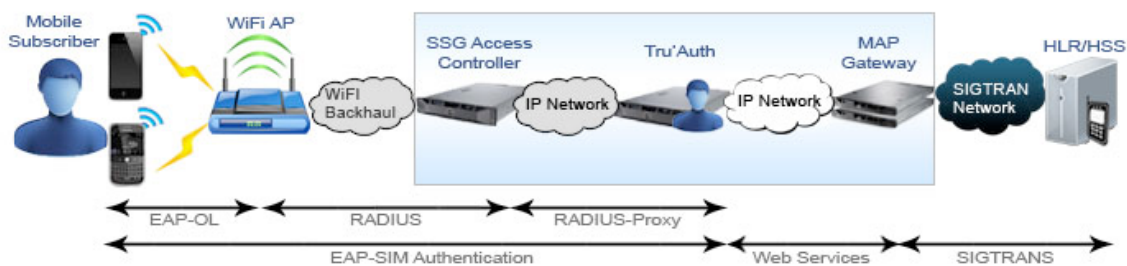
- High availability with automated failover
- System snapshot backup and restore
- Web-based patch management
- IMSI Whitelist

Standard Compliance

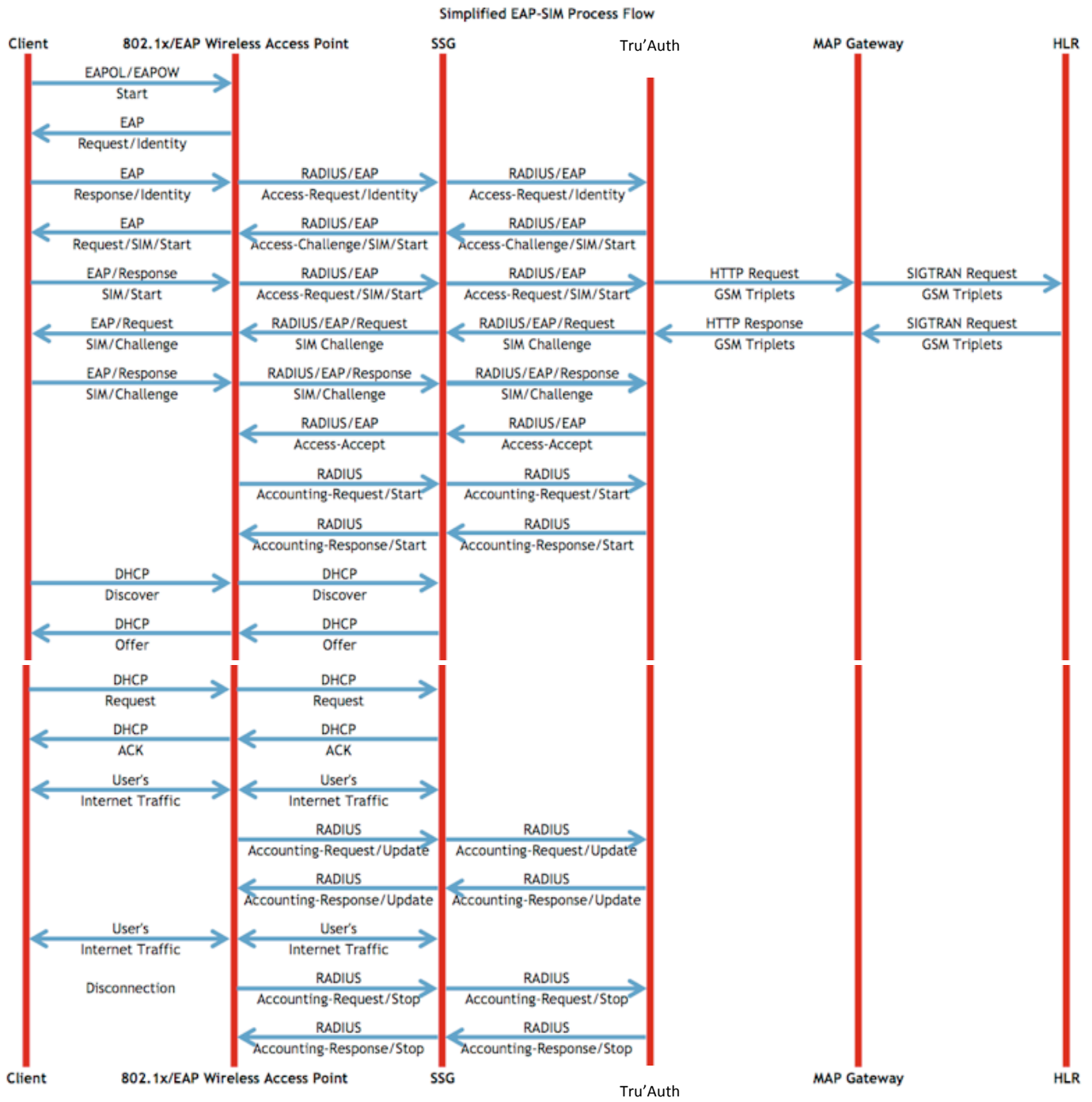
- ITU-T recommendations Q.711 -- Q.714 (SCCP)
- ITU-T recommendations Q.771 -- Q.775 (TCAP)
- GSM 09.002 Mobile Application Part
- GSM 29.002 Mobile Application Part

Related Systems

- Tru'Auth Central Management System
- Tru'Auth Radius



EAP-SIM Process Flow



RADIUS Authentication : UDP 1812
 RADIUS Accounting : UDP 1813
 DHCP : UDP 67
 HTTP : TCP 80
 HTTPS : TCP 443

Specifications

	Tru'Auth MAP
Model	3200
TPS	Up to 300 (Max)
Network	2 x Service Port 10/100/1000/10000BaseT (bonded) 2 x HA Port 10/100/1000/10000BaseT (bonded)
Remote Management	1 x Network Remote Management KVM Port
Rack Mount	1U
Power Supply	AC Redundant
Certification	SCC, CNCA or CCC, CE, TUV, IECCE CB, KSA ICCP, NRCS, BSMI, NRTL, ACMA or C-Tick, ICES, VCCI, GS, GOST, SABS, KCC, FCC, ICT

Advanced Network Technology Laboratories Pte Ltd

1 Syed Alwi Road #03-01 Song Lin Building Singapore 207628

Tel. No.: +65 6858 6789 | Fax: +65 6487 4567

Email: sales@antlabs.com

URL: <http://www.antlabs.com>