

Tru'Auth System

Proven, Scalable and Highly Reliable AAA and Provisioning System

ANTlabs
Connectivity **Made Easy**

ANTlabs Tru'Auth System is a proven, scalable, highly reliable and flexible AAA and provisioning system to meet the requirements of the most demanding and diverse operating environments. It enables Telcos, ISPs and Service Providers to roll out new and innovative services on their WiFi, mobile and broadband (xDSL/cable) networks.



Comprehensive Features List

Template-based Account Type Definitions

- Time-limited account
- Volume-limited account
- Time-and-Volume-limited account
- Automatic relogin of valid sessions

Provisioning Capability

- Diameter PCRF
- Web-based Application Programming Interface (API)
- Short Message System (SMS) One-time Password (OTP)
- Account generation via Account Receipt Printer
- IP Pool Management

Authentication Protocols

- PAP, CHAP, MS-CHAP, MS-CHAPv2
- EAP (SIM, AKA, TLS, TTLS, PAP, PEAP)
- MAC-based authentication
- Simulation of HLR for EAP-SIM authentication
- Customizable authorization methods

Performance

- Up to 1,000 TPS Radius messages
- Up to 1,000,000 active login sessions
- Up to 2,000,000 local subscriber accounts

Logs and Reports

- Accounting logs (searchable)
- Online user listing (searchable)
- Listing of failed login attempts
- IMSI to TIMSI to MSISDN mapping for reporting

Proxy

- AAA Radius Proxy
- iPass / WISPr support
- Quota management for proxied authentication
- Centralized accounting for clearinghouse capability

Administration

- Secure web-based administration
- Command line interface

Reliability

- High availability (automated failover with session synchronization)
- System snapshot backup and restore
- Web-based patch management

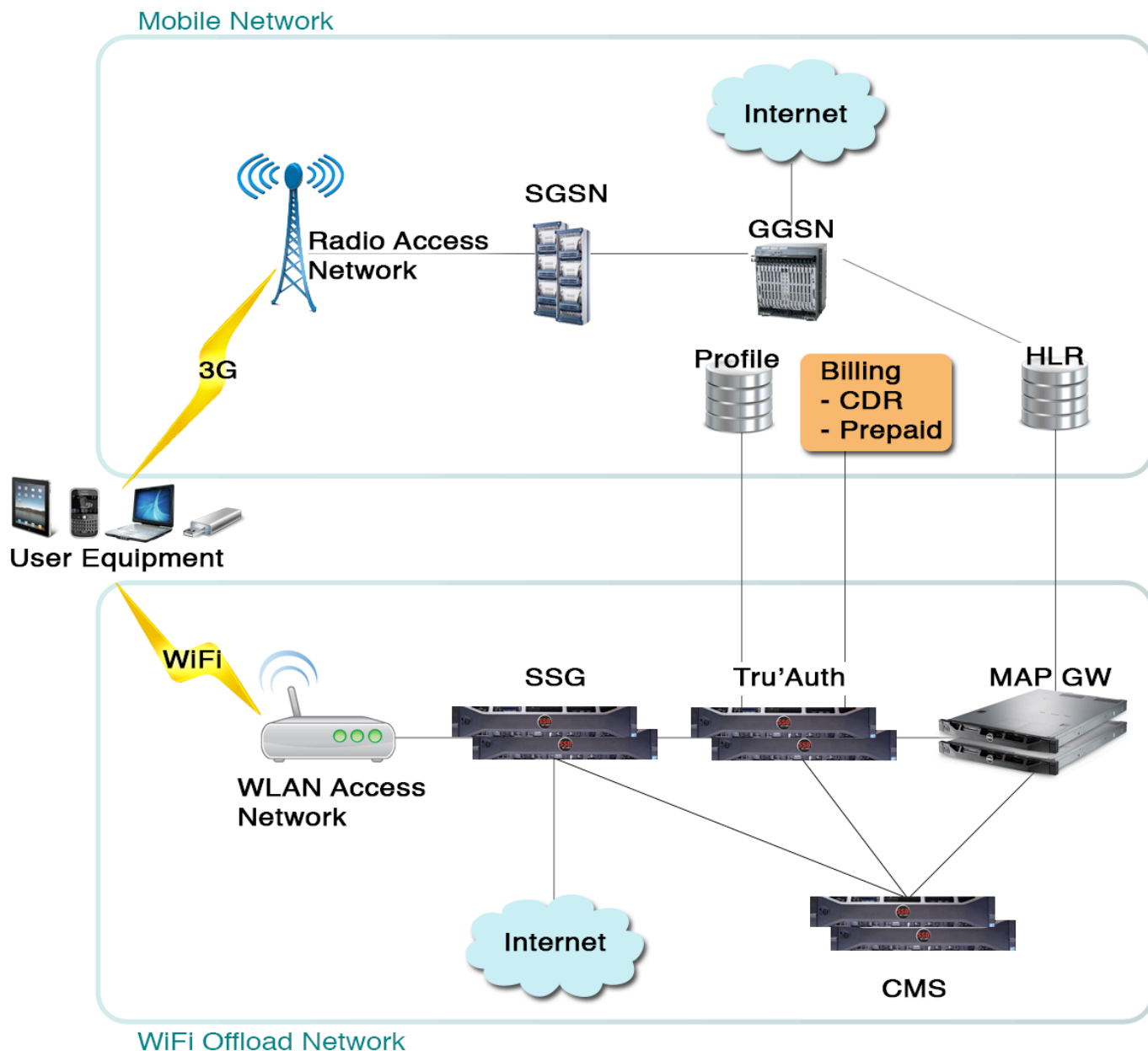
RFC Compliance

- RFC 2865 Remote Authentication Dial In User Service (RADIUS)
- RFC 2866 RADIUS Accounting
- RFC 2869 RADIUS Extensions
- RFC 2619 RADIUS Authentication Server MIB
- RFC 2621 RADIUS Accounting Server MIB
- RFC 1227 SNMP MUX Protocol and MIB
- RFC 2868 RADIUS Attributes for Tunnel Protocol Support (TPS)
- RFC 2867 RADIUS Accounting Modifications for TPS

Related Systems

- Tru'Auth Central Management System (CMS)
- Tru'Auth Application Delivery Controller (ADC)
- Tru'Auth Message Application Part Gateway (MAP GW)

Application Scenario: Mobile Offload



Tru'Auth used in 3G Offload

ANTlabs Tru'Auth is deployed in various Telco, ISP and service provider environments, enabling them to effectively and quickly deploy tiered and differentiated services, across combinations of WiFi, 3G/4G and broadband networks. It can be used for provisioning and billing of dynamic and permanent user accounts and authentication, authorisation and accounting of these accounts.

Specifications

	Tru'Auth RADIUS		
Model	3100	3200	3300
Subscribers	100K	500K	2M
Login Subscriber Sessions	50K	250K	500K
TPS	50	250	500
DB Records (Searchable)	500K	2.5M	10M
CDR Logs	100M	200M	500M
Network	2 x Service Port 10/100/1000/10000BaseT (bonded) , 2 x HA Port 10/100/1000/10000BaseT (bonded)		
Remote Management	1 x Network Remote Management KVM Port		
Rack Mount	1U	2U	2U
Power Supply	AC Redundant		
Certification	SCC, CNCA or CCC, CE, TUV, IECEE CB, KSA ICCP, NRCS, BSMI, NRTL, ACMA or C-Tick, ICES, VCCI, GS, GOST, SABS, KCC, FCC, ICT		

*Figures shown are the maximum number that is supported by appliance

Tru'Auth Related Systems

	Tru'Auth CMS		Tru'Auth MAP	Tru' Auth ADC
Model	3200	3300	3200	3200
Login Subscriber Sessions	x2	x2		
TPS	x2	x2	300	50000
DB Records (Searchable)	100M	1B		
CDR Logs	1.5B	4.5B		
Network	2 x Service Port 10/100/1000/10000BaseT (bonded), 2 x HA Port 10/100/1000/10000BaseT (bonded)			
Remote Management	1 x Network Remote Management KVM Port			
Rack Mount	2U	2U	1U	1U
Power Supply	AC Redundant			
Certification	SCC, CNCA or CCC, CE, TUV, IECEE CB, KSA ICCP, NRCS, BSMI, NRTL, ACMA or C-Tick, ICES, VCCI, GS, GOST, SABS, KCC, FCC, ICT			

*Figures shown are the maximum number that is supported by appliance